

Technical Data Sheet



The United States of America:
by Peter Kwasny Inc.
62-64 Enter Lane
Islandia, NY 11749

Distributed in

Canada:
Peter Kwasny Spraypaint Canada Inc.
40 University Avenue, Suite 904
Toronto, ON. M5J 1T1

Toll free North America
Phone: 1-844-426-6330 / Fax: 1-866-226-6434
order@kwasny.us / service@kwasny.us
www.spraymax.com

SprayMax®
2K FillClean® Solventborne 2K Coatings
Series A
175 g NET WT. 6.2 oz
Art. Nr. 3680080



Product

Description / Purpose

Aerosol can prefilled with propellant gas and solvent for one-time filling with paints using suitable filling equipment.

For information on the paint series to be filled into this FILLClean can, see the website
www.spraymax.com.

Filling process with use of a filling device:

Remove the spray head with a slight twist and fill the can with 100 ml of paint using the filling device intended.

We recommend sieving the paint before filling into the filling cap or filling cylinder. The operating instructions of the manufacturer of the filling device must be observed.

After the filling process, assemble the spray head with a slight twisting motion again.

Assemble the cap and note the paint / colour code and filling quantity on the can where appropriate.

EPA Coating Category

EFA Exact Match Finish Automotive

PWR Limit 1.50

**CARB Aerosol Rule Coating Category
(01/2017)**

TCC Two Component Coating

PWR Limit 1.20

Substrate

The surface must be free of grease, dust and dry and completely derusted.

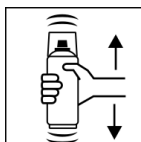
Processing

Protection measures



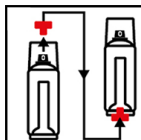
Wear personal protection equipment.
(respiratory mask / gloves / goggles)
For more information, see safety data sheet.

Shake



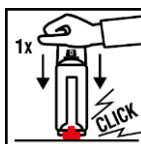
Thoroughly shake the FILLClean can filled with lacquer for 2 minutes before activation- from when the mixing balls are heard.

Place red button



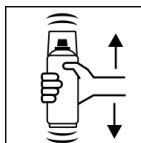
Remove the red push button from the cap. Turn the can 180° and place the push button on the pin in the bottom of the can.

Press red button



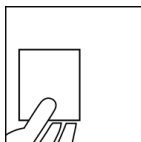
Place the can vertically on a solid surface. Press the cap with the heel of your hand as far as possible and thus release the hardener cartridge.

Shake



After activating, shake can again thoroughly for 2 minutes, again from when the mixing balls are heard.

Spray to test



After shaking the can, test spray and check compatibility with the surface and the colour.

Properties of the filled can

The application properties of the aerosol filled with the paint and the pot-life is depending on the paint system. Likewise, the properties of the fully cured paint surface.

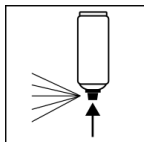
Please read the Technical data sheet of the paint and consult your paint dealer for any further information.

Processing conditions



In most cases, the optimum application at 64° F – 77° F (18° C - 25° C) and a relative humidity from 40 - 60 %.

Finish



After painting, turn the can upside down and spray for 3 - 5 seconds to clean the valve.

Additional Information

Important Information



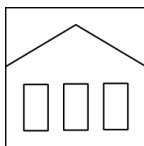
Avoid bumps, friction and impact.

Suitable for a wide range of 2K solvent-based paints.

Always check the suitability of the paint beforehand.

Do not leave the spray can without the spray head for a longer period of time, otherwise the spray head may no longer be able to be fitted.

Shelf Life



Valid for the can without paintfill:

24 months if stored properly between 60° F - 77° F / 15 - 25° C and a relative humidity not exceeding 60 %. The can must be stored and transported in an upright position in a dry place where it is protected against chemical and mechanical influences.

The safety information on the can and all statutory provisions applicable for the storage site must be observed.

Disposal



The completely emptied spray cans must be disposed of in the recycling system. Cans with hardened material must be disposed of as special waste.

Note

For professional use only.

Identification, see safety data sheet.

The contents in this technical data sheet were created with great care and reflect our current state of knowledge. They provide the user with application-specific information and do not promise certain properties. The information is non-binding and we accept no liability for its integrity, accuracy and completeness. They do not relieve the user of their duty to check the suitability of our product for the intended purpose. The warnings printed on our labels must be respected. Our brands and patents are protected by copyright. All rights reserved. We reserve the right to update, amend or supplement the content of the information without prior notice.