

Technical Data Sheet



The United States of America:
by Peter Kwasny Inc.
62-64 Enter Lane
Islandia, NY 11749

Distributed in

Canada:
Peter Kwasny Spraypaint Canada Inc.
40 University Avenue, Suite 904
Toronto, ON. M5J 1T1

Toll free North America
Phone: 1-844-426-6330 / Fax: 1-866-226-6434
order@kwasny.us / service@kwasny.us
www.spraymax.com

SprayMax®
1K Trim Paint Black High Gloss
320 g NET WT. 11.3 oz
Art. Nr. 3680101



Product

Description / Purpose

1-component top coats for interior and outdoor area.
For high-quality topcoats and spot repair applications on vehicles and motorcycles.

Properties

- Easy to use
- High yield
- Excellent coverage thanks to high solid content
- Dries quickly
- Very good levelling
- High gloss
- Very good polish ability

Material base

Nitro combination resin

Colour

Deep Black

Gloss level

Gloss, 80 gloss units at 60° measuring angle

Solid content

approx. 16 % by weight relating to the diluted paint

EPA Coating Category

NFP Non Flat Paint

PWR Limit 1.40

CARB Aerosol Rule Coating Category (01/2017)

NFC Non Flat Coating

PWR Limit 0.95

Substrate

Metals (cleaned and sanded).

In the event of high requirements in terms of mechanical stress and corrosion protection and, in particular, critical surfaces such as aluminum or pre-treat galvanized surfaces with a suitable primer beforehand.

Various Plastics (cleaned and sanded)

Check compatibility and adhesion first on an unobtrusive area. If necessary prime with a suitable Plastic Adhesion Promotor.

Not suitable for Substrates of Polyvinyl Chloride (PVC), Polystyrene (PS), Polyethylene (PE), Polypropylene (PP) and Blends thereof (E.g. PP/EPDM)

Wood (cleaned and sanded)

Glass, Ceramics (cleaned)

The damaged area must be dry and free of grease and dust and all rust needs to be removed.

Processing

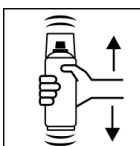
Protection measures



Wear personal protection equipment.
(respiratory mask / gloves / goggles)

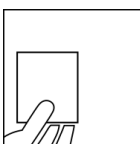
For more information, see safety data sheet.

Shake



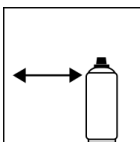
Shake can thoroughly for at least 2 minutes from when the mixing balls are heard.

Spray to test



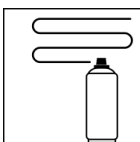
After shaking the can, test spray and check compatibility with the surface and the colour.

Spraying distance



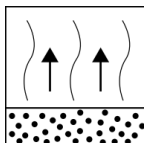
6 - 8 inches / 15 - 20 cm

Spray passes



2 - 3 spray coats approx. 10 µm each

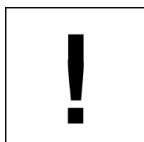
Flash-off time



Flash time:

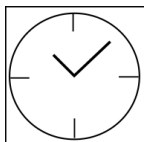
approx. 1 - 5 min between 2 spray coats / 68° F (20°C)

Processing conditions



Optimum application at 64° F - 77° F (18° C - 25° C) and a relative humidity from 40 - 60 %.

Drying



dust dry: 15 min

dry to touch: approx. 40 min

Fully cured: approx. 3 h / 68° F (20° C), 30 min. / 140° F (60° C)

The stated values refer to the above mentioned processing conditions. The level of dryness is determined pursuant to DIN 53150.



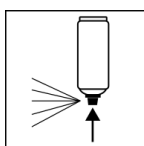
IR: approx. 5 - 8 min.

Respect technical manual

Continue

Can be polished with commercially available polishes after approx. 6 hours of drying. Can be painted over with itself at any time. Can be used with commercially available 1K or 2K clear coats can be painted over.

Finish



After painting, turn the can upside down and spray for 3 - 5 seconds to clean the valve.

Additional Information

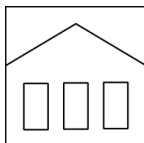
Important Information



Avoid bumps, friction and impact.

Do not apply to any safety-relevant plastic parts, e.g. helmets. Not coated with synthetic resin paints Varnish substrates, as this leads to lifting and lead to rippling of the old paintwork can.

Shelf Life



60 months

The usage period refers to an unused can that is stored correctly at a temperature of 60° F - 77° F / 15 - 25° C and a relative humidity below 60%. The can must be stored and transported in an upright position in a dry place where it is protected against chemical and mechanical influences. The safety information on the can and all statutory provisions applicable for the storage site must be observed.

Disposal



The completely emptied spray cans must be disposed of in the recycling system. Cans with hardened material must be disposed of as special waste.

Note

For professional use only.

Identification, see safety data sheet.

The contents in this technical data sheet were created with great care and reflect our current state of knowledge. They provide the user with application-specific information and do not promise certain properties. The information is non-binding and we accept no liability for its integrity, accuracy and completeness. They do not relieve the user of their duty to check the suitability of our product for the intended purpose. The warnings printed on our labels must be respected. Our brands and patents are protected by copyright. All rights reserved. We reserve the right to update, amend or supplement the content of the information without prior notice.